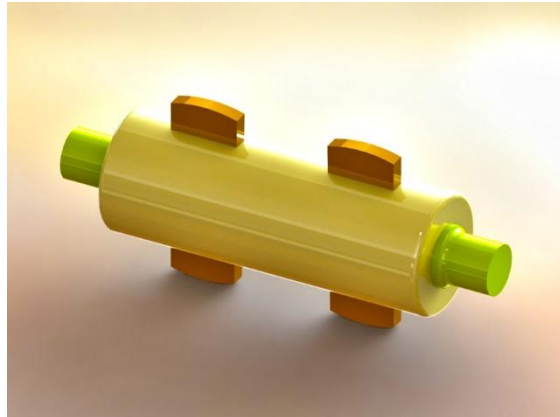


TOM-059 **SLEEVE AND COTTER JOINTMODEL**



TECHNICAL DESCRIPTION :

This Wooden or Metal model mounted on sturdy frame displaying all components and mechanism.

DIMENSIONS AND WEIGHT :

Size :0.3m.(L)x 0.3 m(W) X 0.2m (H)

Weight :Approx. 2 Kg

SCOPE OF DELIVERY:

1. model